

**Legend**

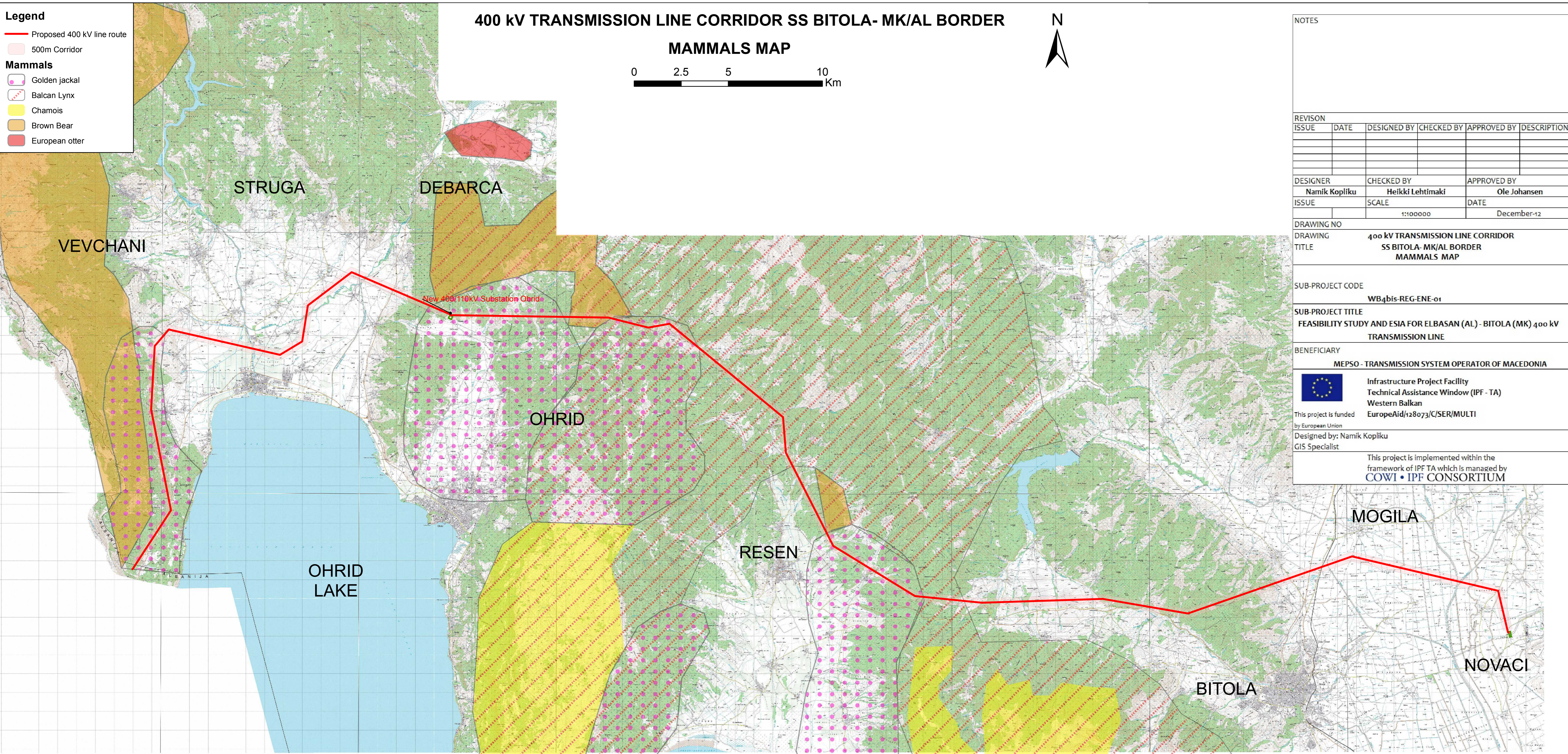
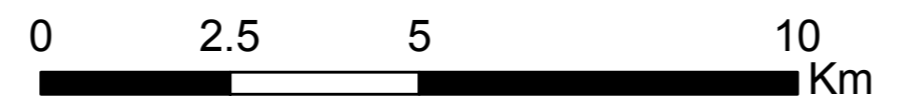
- Proposed 400 kV line route
- 500m Corridor

**Mammals**

- Golden jackal
- Balkan Lynx
- Chamois
- Brown Bear
- European otter

# 400 kV TRANSMISSION LINE CORRIDOR SS BITOLA- MK/AL BORDER

## MAMMALS MAP



NOTES

REVISION					
ISSUE	DATE	DESIGNED BY	CHECKED BY	APPROVED BY	DESCRIPTION

DESIGNER	CHECKED BY	APPROVED BY
Namik Kopliku	Heikki Lehtimaki	Ole Johansen
ISSUE	SCALE	DATE
	1:100000	December-12

DRAWING NO	
DRAWING TITLE	400 kV TRANSMISSION LINE CORRIDOR SS BITOLA- MK/AL BORDER MAMMALS MAP

SUB-PROJECT CODE	WB4bis-REG-ENE-01
------------------	-------------------

SUB-PROJECT TITLE	FEASIBILITY STUDY AND ESIA FOR ELBASAN (AL) - BITOLA (MK) 400 kV TRANSMISSION LINE
-------------------	--

BENEFICIARY	MEPSO - TRANSMISSION SYSTEM OPERATOR OF MACEDONIA
-------------	---



Infrastructure Project Facility  
 Technical Assistance Window (IPF - TA)  
 Western Balkan  
 EuropeAid/128073/C/SER/MULTI

This project is funded by European Union

Designed by: Namik Kopliku  
 GIS Specialist

This project is implemented within the framework of IPF TA which is managed by COWI • IPF CONSORTIUM

MOGILA

NOVACI

BITOLA

RESEN

OHRID

DEBARCA

STRUGA

VEVCHANI

OHRID LAKE